

# Mini TDGP™

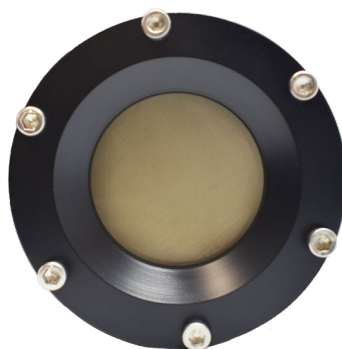
## MINI TDGP™ SUBMERSIBLE SENSOR

The Mini TDGP™ measures the total dissolved gas pressure in liquids. It provides accurate TDGP data and is designed for use in aquaculture, dam spillways, groundwater monitoring, and industrial applications.

Unlike other total gas pressure probes, the Mini TDGP™ is not affected by increasing hydrostatic pressure. The sensor's semi-permeable membrane is also biofilm resistant.

The rugged Mini TDGP™ sensor is designed for use in water, oil, and contaminated mixtures. The probe combines an oil resistant membrane with a compact pressure sensor that provides quality TDGP data. The Mini TDGP™ sensor can be used for long term deployments with simple, stable and accurate results.

With periodic membrane cleaning and calibration checks, the Mini TDGP™ requires minimal maintenance.



## FEATURES

- High accuracy, 0.1%
- Low power consumption
- Easy integration
- Long-term stability
- Multiple data output formats available
- Lightweight
- Internal data logger and controller with 2GB flash memory

## TDGP SENSOR APPLICATIONS

- Monitoring gas supersaturation levels in water
- Monitoring gas pressure in water wells during pumping
- Aquaculture
- Data correction for water samples collected for groundwater and wellwater monitoring
- Monitoring TDGP in transformer fluids

**PRO**  
**OCEANUS**

Dissolved Gas Sensors

# Mini TDGP™

## SENSOR SPECIFICATIONS

### Sensor Performance

<b>TDGP Range</b>	0-2 bar Absolute
*other ranges available	0-5 bar Absolute
	0-14 bar Absolute
<b>Resolution</b>	0.002% of Full Scale
<b>Accuracy</b>	± 0.1% (Temperature compensated over full temperature range)
<b>Equilibration time (<math>t_{63}</math>)</b>	Dependent on gas composition

### Physical

<b>Length</b>	28 cm (11 in)
<b>Diameter</b>	5.3 cm (2.1 in)
<b>Weight</b>	Air: 0.53 kg (1.2 lbs) Water: -0.06 kg (-0.1 lbs)
<b>Housing Material</b>	Acetal Plastic
<b>Depth Rating</b>	0-600 meters (plastic) up to 0-6000 meters (titanium)
<b>Water Temperature</b>	-2° to 40° C

### Electrical

<b>Input voltage</b>	7-24 VDC
<b>Power consumption</b>	0.06 W (5 mA at 12 V)
<b>Data output</b>	digital: RS-232, ASCII CSV
<b>4-Pin Male MCBH Impulse connector</b>	

### Optional Accessories

#### Titanium housings

Rated up to 6000 m depth

#### Internal battery power

#### External battery pack

19, 76 or 134 Amp-hour capacity

#### Water-pumped head

Reduce biofouling and improve response rate

#### Mooring cage or frame with instrument brackets

#### Pigtail Cables with Locking Sleeves

5, 10, 25, 50 meters, or longer



Water-Pumped Head Accessory



Pigtail Cable with Locking Sleeve



Copper Antifouling Shield



Instrument and Battery Mooring Bracket